

## ESTO - INSTALLATION

ESTO ACOUSTIC PANEL CAN BE EASILY INSTALLED OVER EXISTING WALL WITH THE HELP OF ALUMINIM CHANNEL & CLIPS



ALUMINIUM CHANNEL

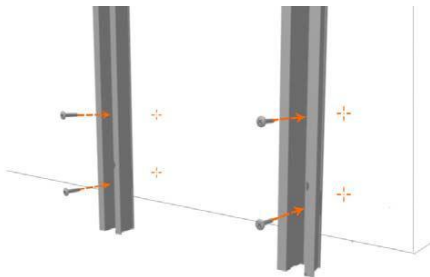


ALUMINIUM CLIP

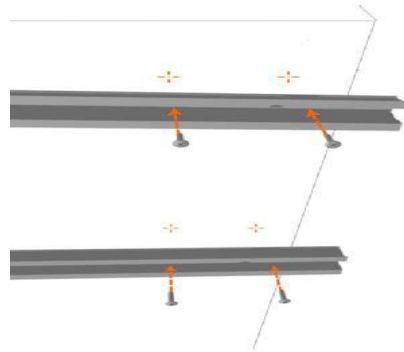
### INSTALLATION

ESTO Grooved Acoustic Panel can be affixed to the wall using aluminium channel & clips, as follows:

1. Install /screw aluminium channel to surface at 600mm center to center vertically / horizontally

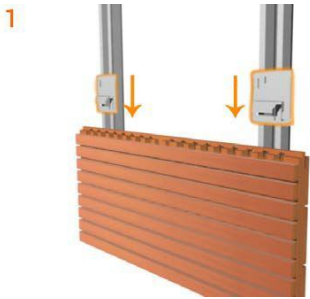


FOR HORIZONTAL VIEW OF GROOVED PANEL

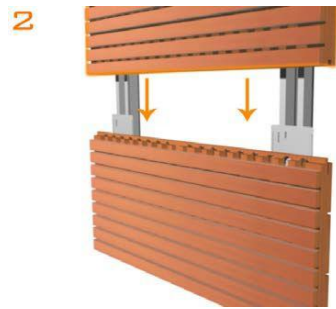


FOR VERTICAL VIEW OF GROOVED PANEL

2. Fix aluminium clip on channel & tight as shown in picture below -



1 Position and fix the first panel using Clips



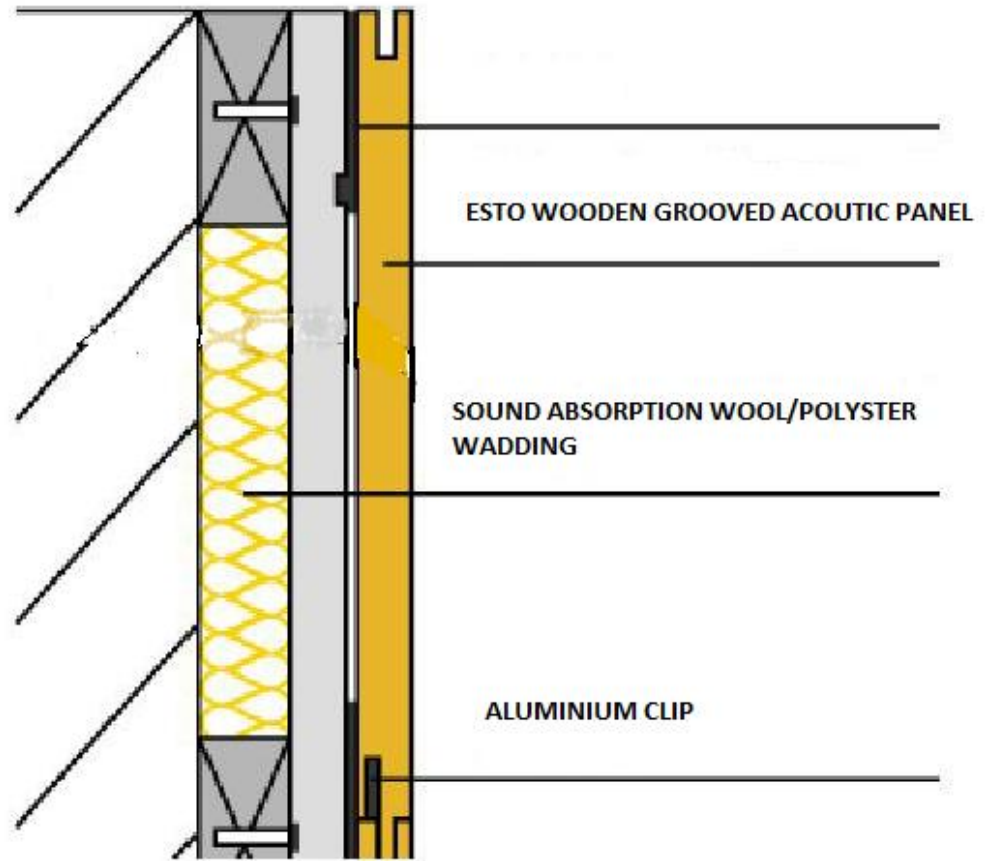
2 Install subsequent tongue and grooved panels and secure with Fixing Clips



3

**FOR HIGHER  
ACOSUTIC  
PERFORMANCE**

Cavity between the wall & grooved panel filled with sound absorption wool or polyester wadding gives NRC 0.9



- ❖ ESTO GROOVED PANEL CAN ALSO BE USED IN CEILING WITH HELP OF ALUMINIUM CHANNEL & CLIPS