



World's Most trusted

100% Made In India Brand



BENEFITS

- Excellent Sound absorption (NRC 0.7-0.9)
- Aesthetic look
- Multiple colour option
- Environment friendly

AREA OF APPLICATION

- Auditoriums, Conferences Rooms
- Seminar Hall, Libraries, Indoor Stadium
- Cinema Hall, Home Theater
- Studio , Study room, Pubs

TECHNICAL DATA



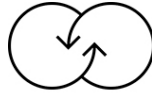
BEST ACOUSTIC
PERFORMANCE



EASY TO CLEAN



HUMIDITY
RESISTANCE



RECYCLABLE



MULTIPLE
COLOUR OPTION

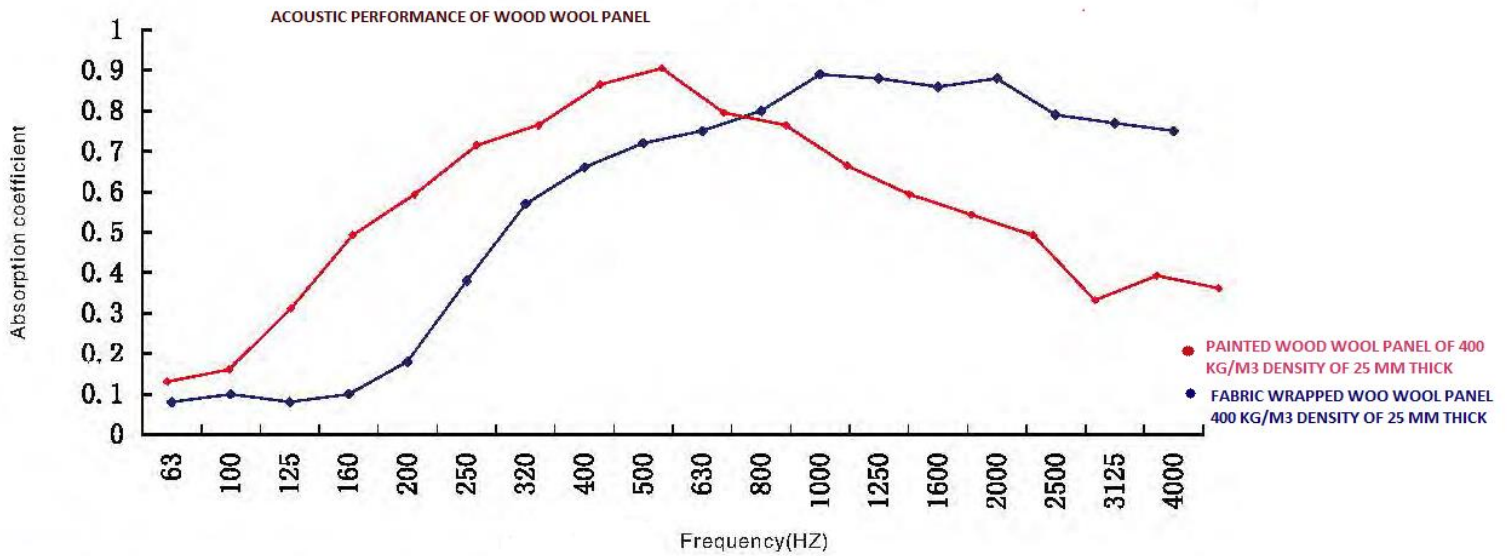


FIRE RETARDANT

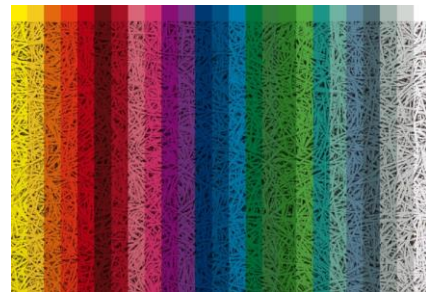
Sizes	600mmx600mm, 600mmX900mm, 600mmX1200mm, 500mmX2000mm Other sizes can be custom ordered *
Thickness	10mm, 15mm, 20mm, 25mm, 40mm, 50mm, 75mm,100mm
Finish	Spray Painted or Fabric wrapped
Colour	Multi Colour Range
NRC	0.7 - 0.90
Density	400 kg/m ³ -- 800 kg/m ³
Thermal Conductivity	0.65 W/mk
Edges	Square, Bevel
Fire Resistance	B1 Class A
Non Combustibility	Mass loss 52.27 % as per ISO 1182
Primary Material	100 % Pure wood fiber & Magnesium

TECHNICAL DATA

NRC CHART



COLOUR OPTIONS



INSTALLATION

PINE ACOUSTIC WALL PANEL CAN BE EASILY SCREWED OR FIXED WITH H- SPLINE OVER EXISTING WALL OR ANY FRAMEWORK.

[OPTION- 1 INSTALLATION WITH H – SPLINE](#)



H- SPLINE

PINE Wall Panel can be affixed to the wall using H -SPLINE, as follows:

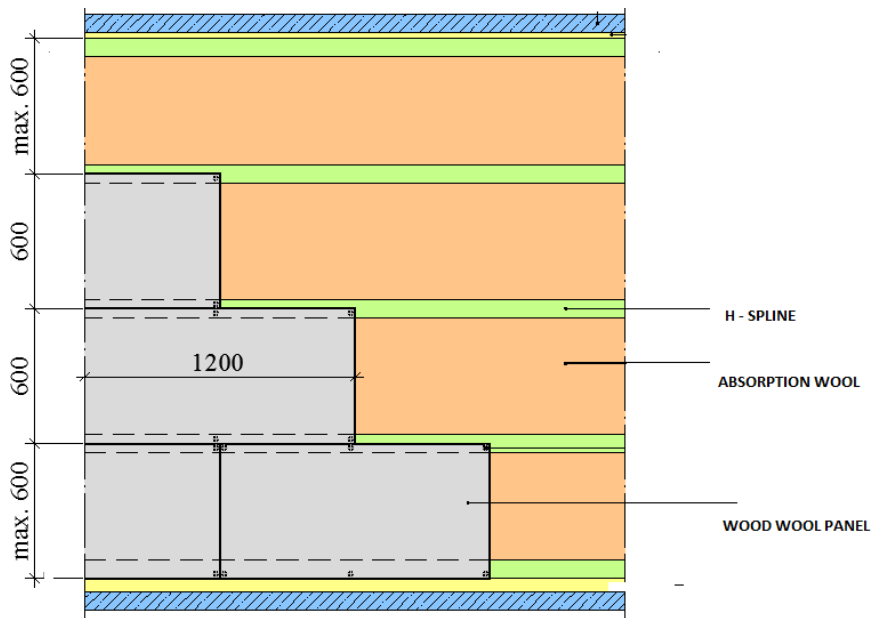


Diagram 1

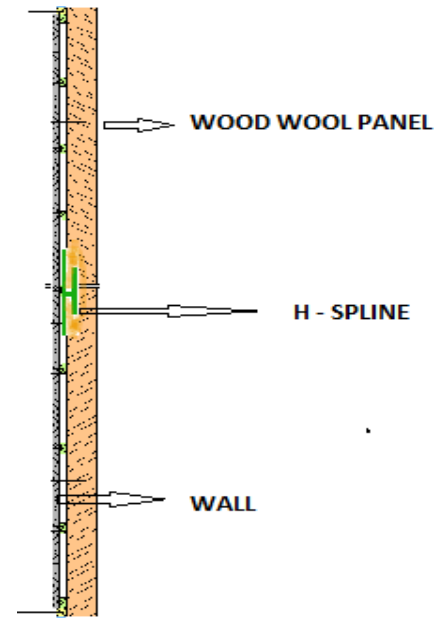
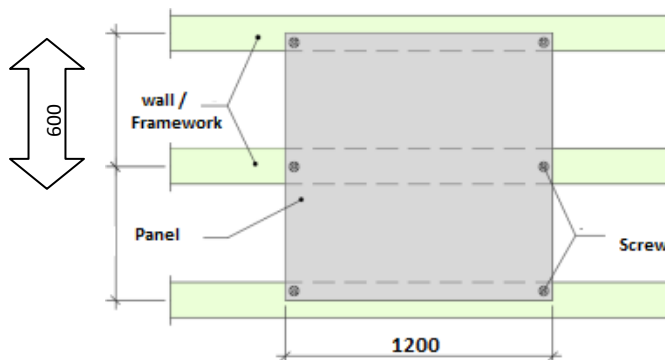


Diagram 2

1. Mark the location of each H- Spline on the wall or framework & fix the H- Spline on mark location (As Shown in Diagram 1)
2. Carefully align the wall panel by inserting edge of the H-spline into the groove of the panel, and continue the process with each panel .(As Shown in Diagram 2)
3. For better acoustic performance fill the cavity (if created) between the wall & panel with the absorption wool.

OPTION- 2 INSTALLATION WITH SCREW :

1. Mark the location of each panel on the wall
2. Carefully align the wall panels on the marked location, screw near to edges of the panel, Apply same colour paint on the face of screw. (As Shown in below diagrams)
3. For better acoustic performance fill the cavity (if created) between the wall & panel with the absorption wool.



MAINTENANCE

THE MAINTENANCE INSTRUCTION & RECOMMENDATIONS TO REMOVE DUST, PEN MARKS, STAINS ARE AS FOLLOWS –

- ✓ USE SMOOTH BRUSH OR VACUUM CLEANER FOR ANY TYPE OF DUST OR DIRT PARTICLES. ENSURE TO CLEAN IN ONE DIRECTION ONLY.

- ✓ USE FRESH GOOD QUALITY CLEANER FOR REMOVING PEN MARKS OR SMUDGES. ENSURE TO CLEAN IN ONE DIRECTION ONLY.
- ✓ USE VOLATILE SOLVENT BASED CLEANER FOR OIL BASED STAINS. ENSURE TO CLEAN IN ONE DIRECTION ONLY.

WARRANTY

- ✓ 5 YEARS WARRANTY FOR CREDESCENCE PINE PANEL

* PLEASE REFER TO WARRANTY DOSSIER FOR WARRANTY CLAUSES & TERMS

CONTACT US

Call us: +91-120-5105463
+91-99900 49959

Email: info@credenceindustries.com , sales@credenceindustries.com

